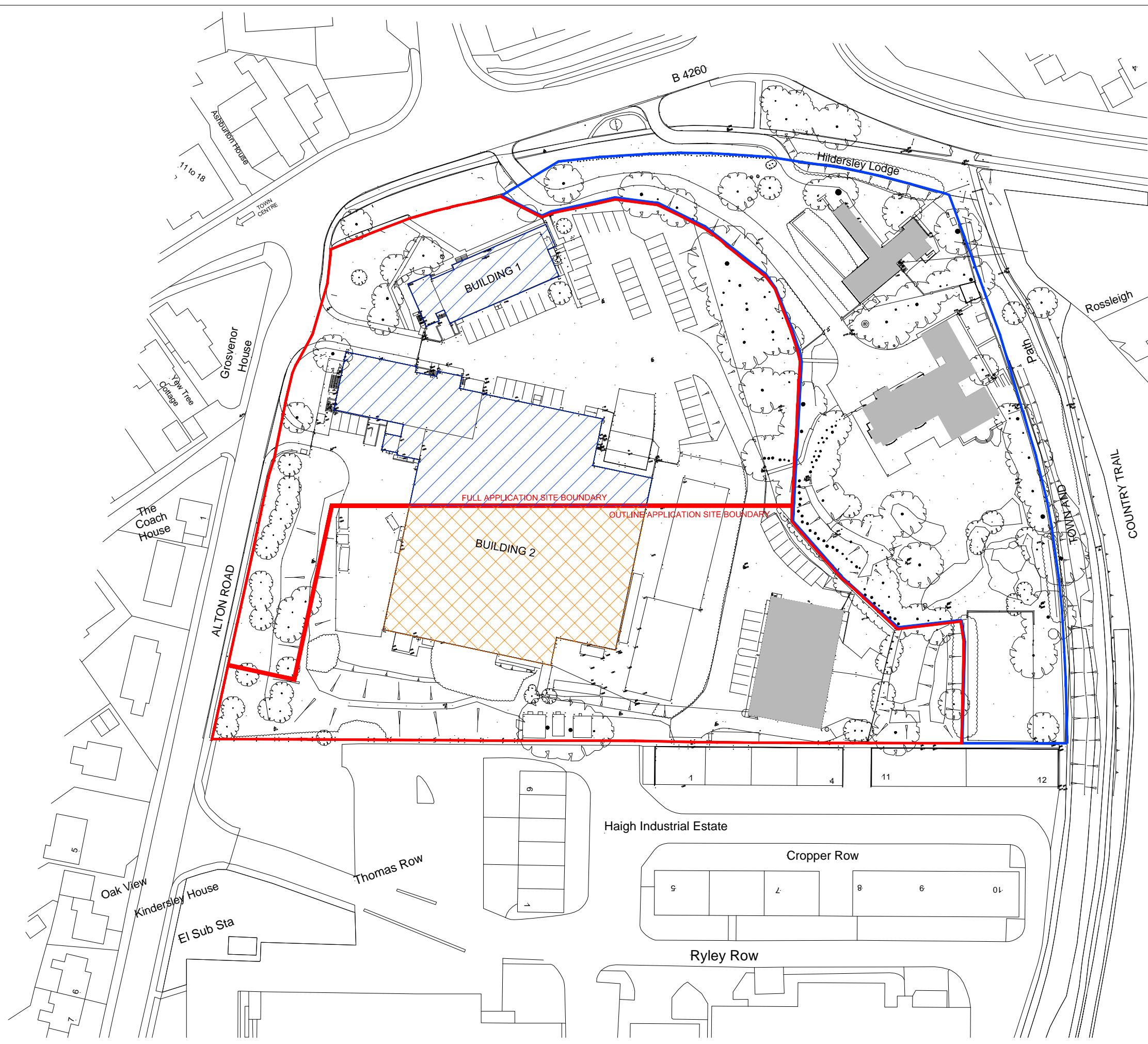




clients logo

- Site Boundaries
- Land Retained by Landlord
- Existing Buildings
Building and Slab to be Demolished
- Existing Buildings
to be Demolished to Slab Level
- Existing Buildings to be Retained



REV	DATE	DESCRIPTION	BY
3	22.02.18	Amended to consultant's comments	AW
2	21.02.18	Amended to consultant's comments	AW
1	16.01.18	Base plan updated	AW

IN CASE OF DOUBT OR DISCREPANCIES PLEASE REFER TO ARCHITECT FOR INSTRUCTIONS.
DRAWING AND SUITABILITY NUMBERS IN ACCORDANCE WITH BILLING 2007.
THIS DRAWING SHOULD NOT BE SCALED.
THIS DRAWING IS COPYRIGHT.

SUITABILITY NUMBER KEY:

WIP - Work in Progress*	DOCUMENTATION - SIGN-OFF
SHARED	A - Fit for construction
S1 - Fit for co-ordination**	B - Fit for construction, with comments
S2 - Fit for information	C - Comprehensive revisions needed
S3 - Fit for internal review and comment	ARCHIVE
S4 - Fit for construction approval	AB - As Built
DOCUMENTATION	FC - Final Construction
D1 - Fit for costing	
D2 - Fit for tender	
D3 - Fit for contractor design	
D4 - Fit for manufacture/ procurement	

* For internal pre-issue usage only.
** For model file usage only.

boyesrees
4th Floor, Greyfriars House
Greyfriars Road, Cardiff CF10 3AL
Tel: 029 2055 8900 Fax: 029 2039 9592
www.boyesrees.co.uk
Registered office: As above Reg. No. 295 1683 (England & Wales)

PROJECT TITLE:
Proposed Lidl Store at Alton Road Ross-on-Wye

DRAWING TITLE:
Demolition Plan

DRAWN BY:	AW	SCALE:	1:1000 @ A3
JOB NO:	5989	DATE:	JAN. 18

SUITABILITY:	S0	REVISION:	3			
PROJECT	ORIGIN	VOLUME	LEVEL	TYPE	DISCIP.	NUMBER
5989	BR	V01	00	DR	A	000007

