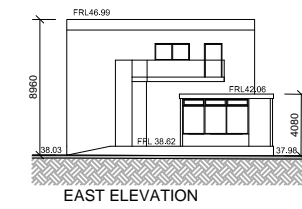
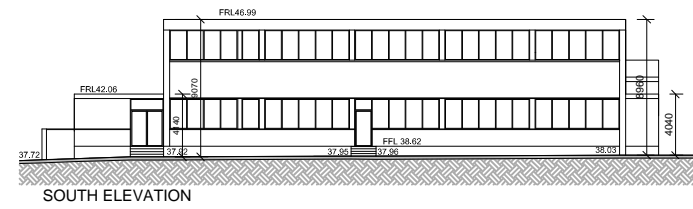
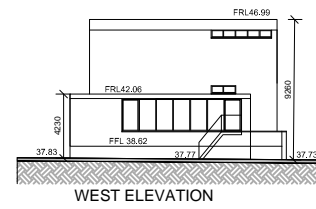
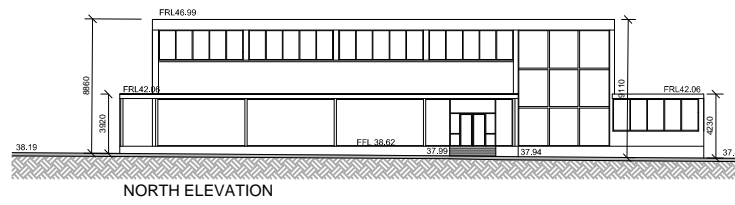


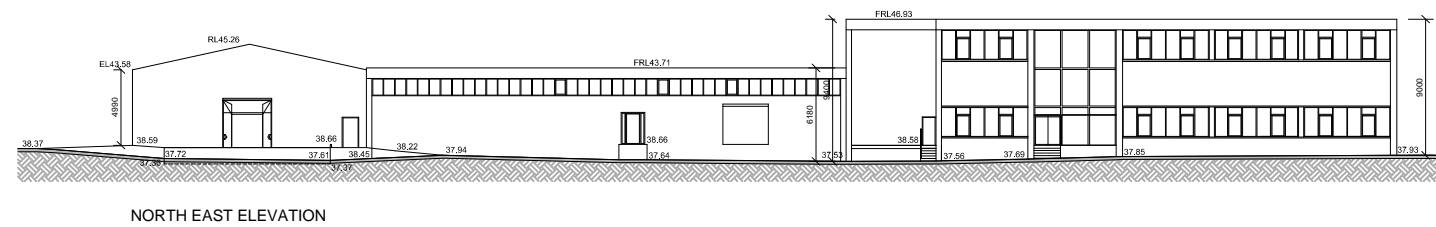
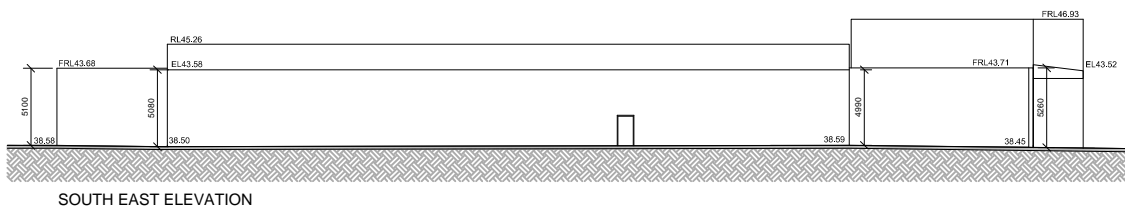
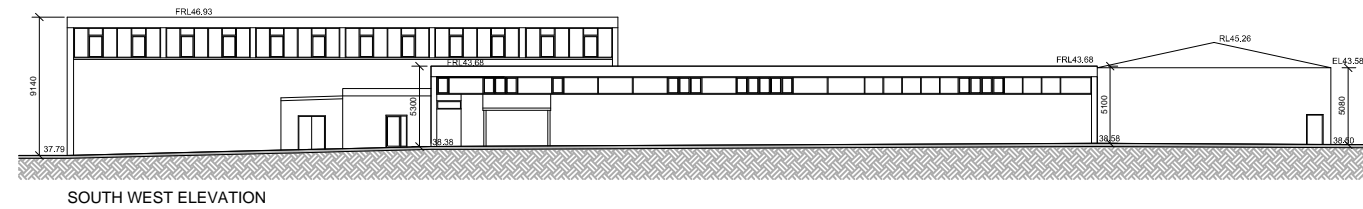
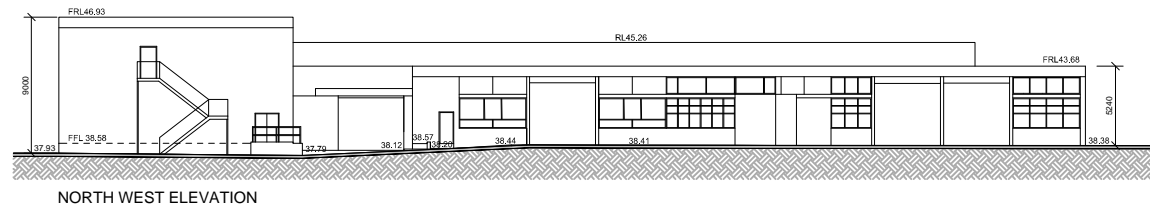


clients logo

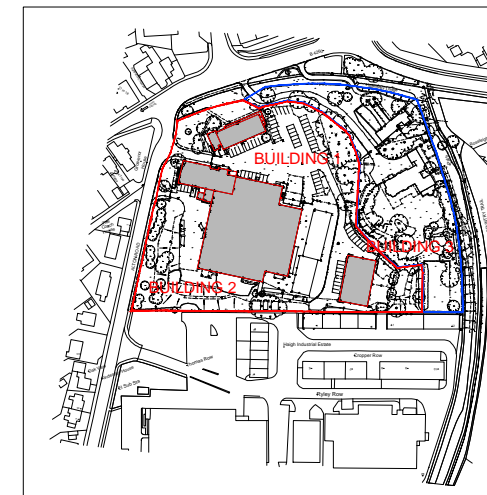
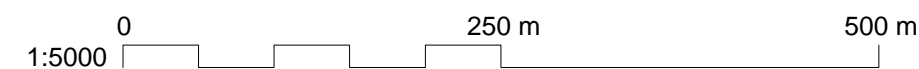
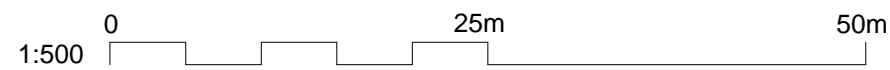
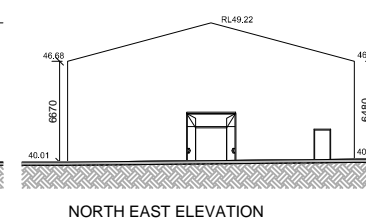
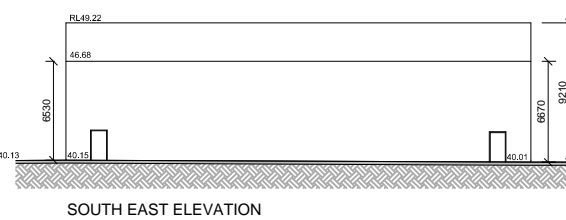
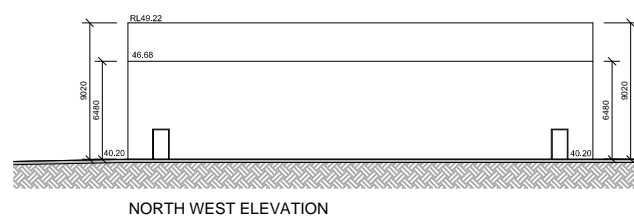
BUILDING 1



BUILDING 2



BUILDING 3



REV	DATE	DESCRIPTION	BY
2	22.02.18	Amended to consultant's comments	AW
1	21.02.18	Amended to consultant's comments	AW

IN CASE OF DOUBT OR DISCREPANCIES PLEASE REFER TO ARCHITECT FOR INSTRUCTIONS.
DRAWING AND SUITABILITY NUMBERS IN ACCORDANCE WITH BILLING 2007.
THIS DRAWING SHOULD NOT BE SCALED.
THIS DRAWING IS COPYRIGHT.

SUITABILITY NUMBER KEY:

WIP	S0 - Work in Progress*	DOCUMENTATION - SIGN-OFF	A - Fit for construction
SHARED	S1 - Fit for co-ordination**	B - Fit for construction, with comments	B - Fit for construction, with comments
	S2 - Fit for information	C - Comprehensive revisions needed	C - Comprehensive revisions needed
	S3 - Fit for internal review and comment	ARCHIVE	AB - As Built
	S4 - Fit for construction approval	FC - Final Construction	FC - Final Construction
DOCUMENTATION	D1 - Fit for costing		* For internal pre-issue usage only.
	D2 - Fit for tender		** For model file usage only.
	D3 - Fit for contractor design		
	D4 - Fit for manufacture/ procurement		

boyes
4th Floor, Greyfriars House
Greyfriars Road, Cardiff CF10 3AL
Tel: 029 2055 8900 Fax: 029 2039 9592
www.boyesrees.co.uk
Registered office: As above Reg No. 295 1683 (England & Wales)

PROJECT TITLE:
Proposed Lidl Store at Alton Road Ross-on-Wye

DRAWING TITLE:
Existing Elevations

DRAWN BY: **RB** SCALE: **1:200 @ A3**

JOB NO: **5989** DATE: **DEC. 17**

SUITABILITY: **S0** REVISION: **2**

PROJECT	ORIGIN	VOLUME	LEVEL	TYPE	DISCIP.	NUMBER
5989	BR	V01	00	DR	A	000003