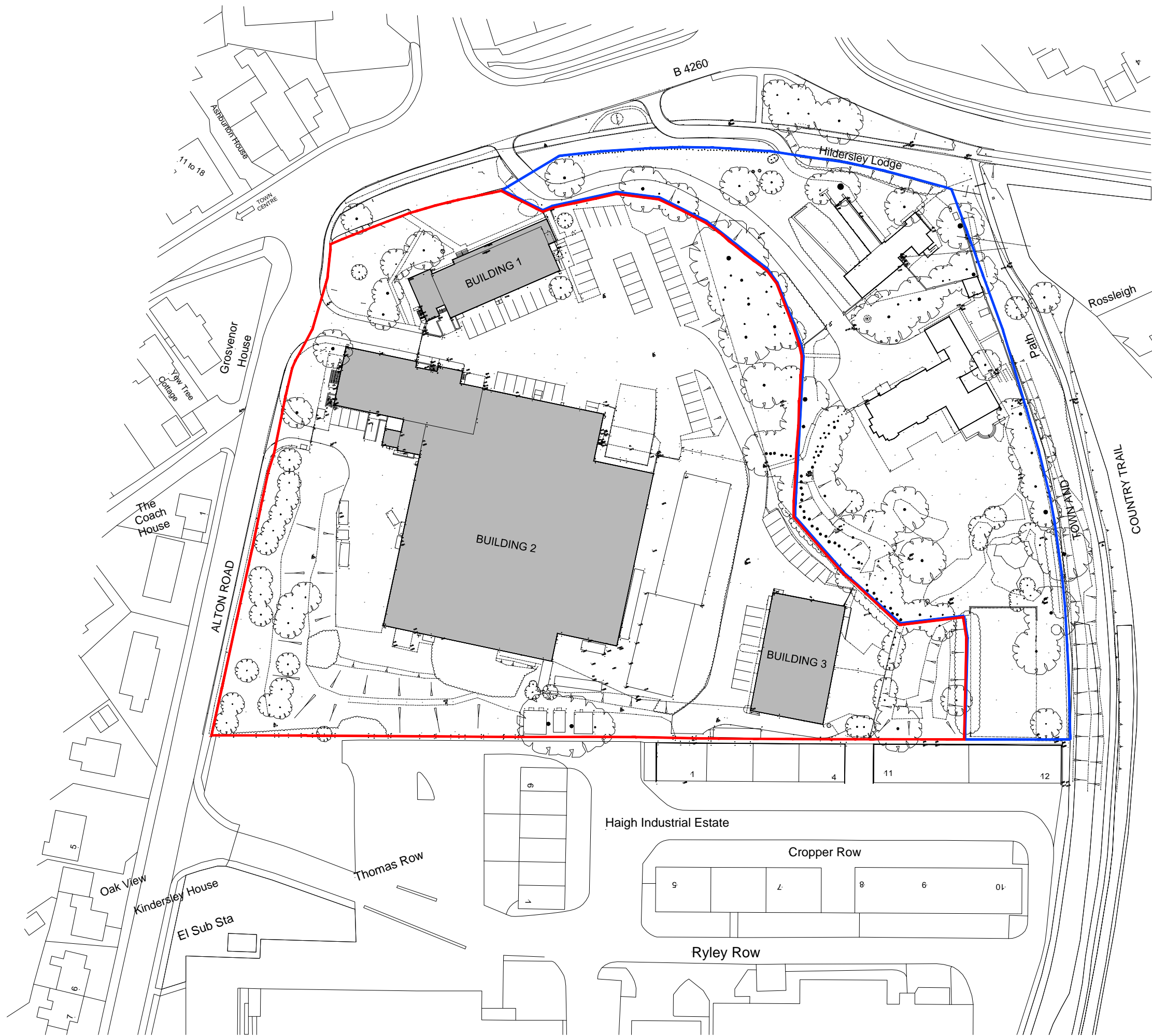




clients logo

**SITE AREA:**  
19,382 m<sup>2</sup>



REV	DATE	DESCRIPTION	BY
2	22.02.18	Amended to consultant's comments	AW
1	21.02.18	Amended to consultant's comments	AW

IN CASE OF DISCREPANCY OR DISCREPANCIES PLEASE REFER TO ARCHITECT FOR INSTRUCTIONS.  
DRAWING AND SUITABILITY NUMBERS IN ACCORDANCE WITH BS11392:2007.  
THIS DRAWING SHOULD NOT BE SCALED.  
THIS DRAWING IS COPYRIGHT.

SUITABILITY NUMBER KEY:	
WIP	DOCUMENTATION - SIGN-OFF
S0 - Work in Progress*	A - Fit for construction
SHARED	B - Fit for construction, with comments
S1 - Fit for co-ordination**	C - Comprehensive revisions needed
S2 - Fit for information	ARCHIVE
S3 - Fit for internal review and comment	AB - As Built
S4 - Fit for construction approval	FC - Final Construction
DOCUMENTATION	
D1 - Fit for costing	* For internal pre-issue usage only.
D2 - Fit for tender	** For model file usage only.
D3 - Fit for contractor design	
D4 - Fit for manufacture/procurement	

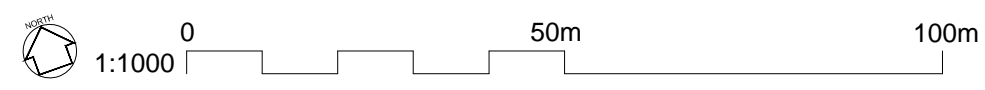
**boyesrees**  
4th Floor, Greyfriars House  
Greyfriars Road, Cardiff CF10 3AL  
Tel: 029 2055 8900 Fax: 029 2039 9592  
www.boyesrees.co.uk  
Registered office. As above Reg  
No. 295 1683 (England & Wales)

PROJECT TITLE:  
**Proposed Lidl Store at  
Alton Road  
Ross-on-Wye**

DRAWING TITLE:  
**Existing Site Plan**

DRAWN BY: RB SCALE: 1:1000 @ A3  
JOB NO: 5989 DATE: DEC. 17

SUITABILITY:	S0	REVISION:	2			
PROJECT	ORIGIN	VOLUME	LEVEL	TYPE	DISCIP.	NUMBER
5989	BR	V01	00	DR	A	000001



CAD Reference: N:\21 Projects\5989 Lidl Ross-on-Wye\Drawings\DWG\Site Plan.dwg  
Date: 22.02.18