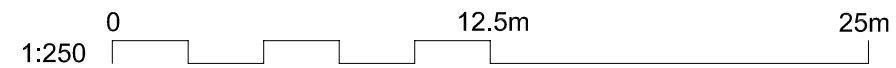
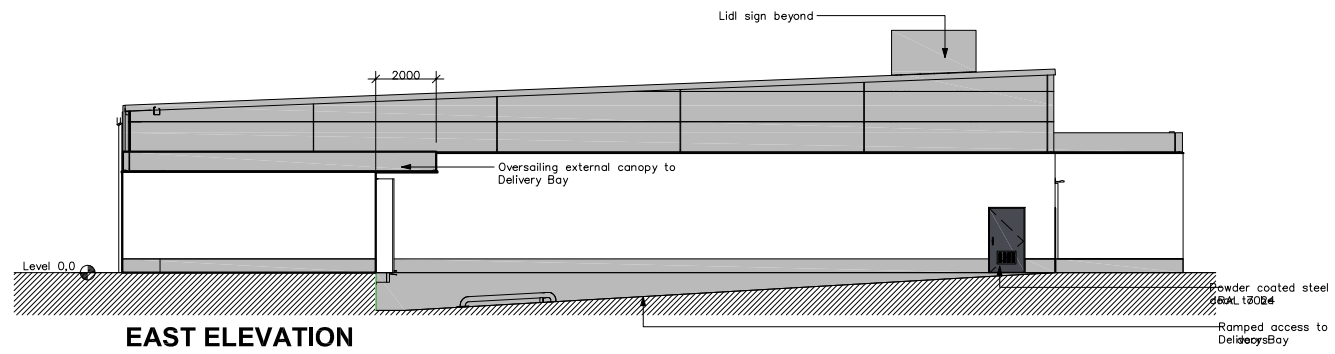
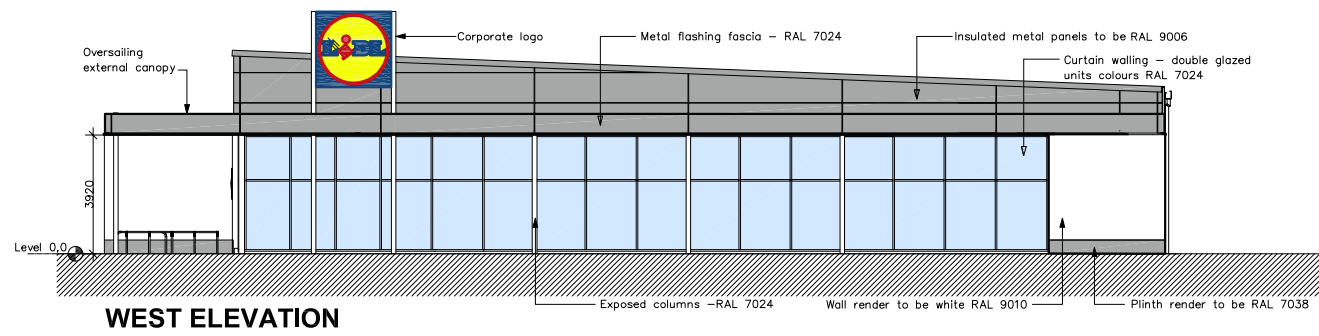
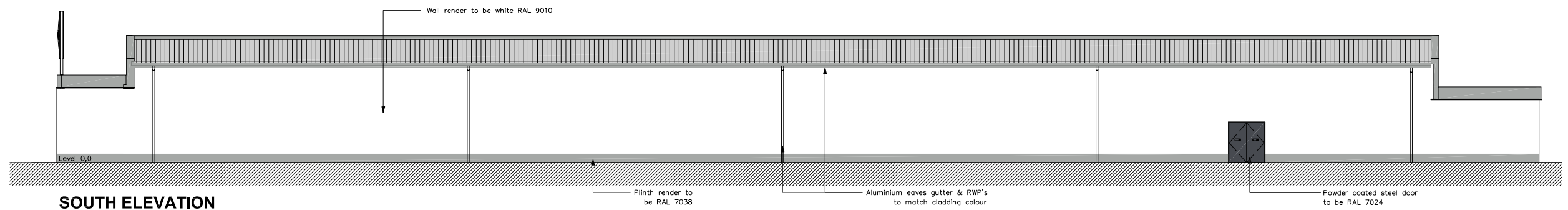
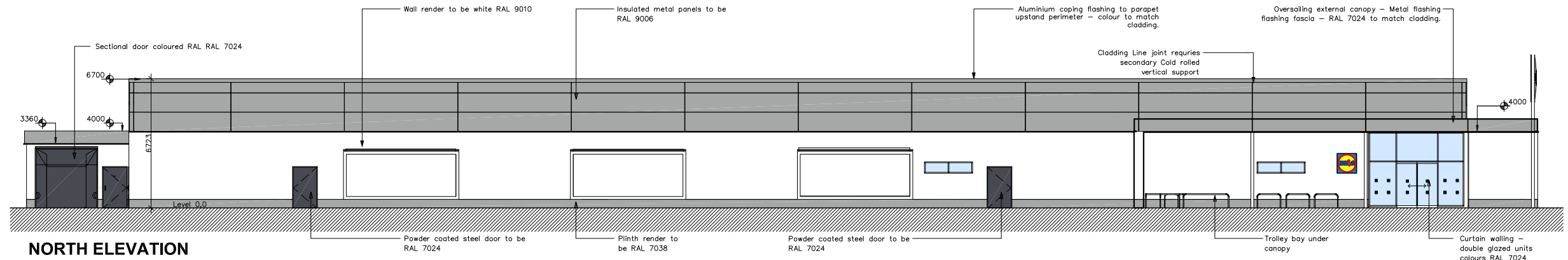




clients logo



REV	DATE	DESCRIPTION	BY
<small>IN CASE OF DOUBT OR DISCREPANCIES PLEASE REFER TO ARCHITECT FOR INSTRUCTIONS. DRAWING AND SUITABILITY NUMBERS IN ACCORDANCE WITH BS1102:2009. THIS DRAWING SHOULD NOT BE SCALED. THIS DRAWING IS COPYRIGHT.</small>			

SUITABILITY NUMBER KEY:		DOCUMENTATION - SIGN-OFF	
WIP	S0 - Work in Progress*	A	- Fit for construction
SHARED	S1 - Fit for co-ordination**	B	- Fit for construction, with comments
	S2 - Fit for information	C	- Comprehensive revisions needed
	S3 - Fit for internal review and comment	ARCHIVE	
	S4 - Fit for construction approval	AB	- As Built
		FC	- Final Construction
		D1	- Fit for costing
		D2	- Fit for tender
		D3	- Fit for contractor design
		D4	- Fit for manufacture/procurement
			* For internal pre-issue usage only.
			** For model file usage only.

4th Floor, Greyfriars House
Greyfriars Road, Cardiff CF10 3AL
Tel: 029 2055 8900 Fax: 029 2039 9592
www.boyesrees.co.uk
Registered office: As above Reg No. 295 1683 (England & Wales)

PROJECT TITLE:
Proposed Lidl Store at Alton Road Ross-on-Wye

DRAWING TITLE:
Proposed Elevations

DRAWN BY: RB SCALE: 1:250 @ A3

JOB NO: 5989 DATE: DEC. 17

SUITABILITY: S0 REVISION: -

PROJECT	ORIGIN	VOLUME	LEVEL	TYPE	DISCIP.	NUMBER
5989	BR	V01	00	DR	A	020001